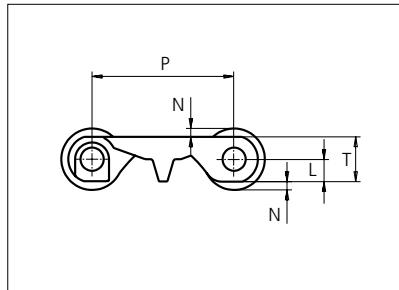
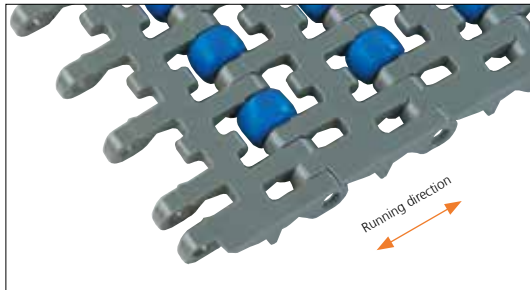


Plastic Modular Belt

Series **uni MPB** Type **RO**



Straight running belt
 Nominal pitch: 50.8 mm (2.00 in)
 Surface type: Roller Top
 Surface opening: 22%
 Backflex radius: 65.0 mm (2.6 in)
 Pin diameter: ø8 mm (0.31 in)

Belt material & color	POM-DI G		mm	in		mm	in
		P (Nominal)	50.8	2.00	L	8.0	0.31
Pin material & color	PP W		mm	in		mm	in
		N	3.0	0.12	T	16.0	0.63

Non standard material and color: See uni Material and Color Overview.

Alternative pin and lock materials: Pin: PA6.6 **N** PP **W** PE **W** PBT **LG** SS304 Lockpin: PA6.6 **B** PBT **LG** Trilock: PA6.6 **N**

Belt width		Permissible tensile force (Belt/pin material)		Belt weight (Belt/pin material)		*Min. No. drive sprocket per shaft	Number of wear strips (Min. No.)	
		POM-DI/PP		POM-DI/PP			**Carry (pcs)	**Return (pcs)
mm	in	N	lbf	kg/m	lb/ft			
151	5.9	1661	373	1.7	1.15	2	2	2
185	7.3	2030	456	2.1	1.40	2	2	2
202	8.0	2222	500	2.3	1.53	2	2	2
252	9.9	2772	623	2.8	1.91	2	2	2
302	11.9	3322	747	3.4	2.29	3	3	2
353	13.9	3883	873	4.0	2.68	3	3	2
403	15.9	4433	997	4.6	3.06	3	3	2
453	17.8	4983	1120	5.1	3.44	4	4	2
504	19.8	5544	1246	5.7	3.83	4	4	2
554	21.8	6094	1370	6.3	4.21	4	4	2
604	23.8	6644	1494	6.8	4.59	5	5	3
655	25.8	7205	1620	7.4	4.97	5	5	3
705	27.8	7755	1743	8.0	5.35	5	5	3

Additional standard belt widths are available in steps of 50.3 mm (1.98 in.) Additional non-standard belt widths are available in steps of 16.8 mm (0.66 in.)

1963	77.3	21593	4854	22.2	14.91	14	14	7
------	------	-------	------	------	-------	----	----	---

Additional standard belt widths are available in steps of 50.3 mm (1.98 in.) Additional non-standard belt widths are available in steps of 16.8 mm (0.66 in.)

2970	116.9	32670	7344	33.6	22.55	20	20	10
------	-------	-------	------	------	-------	----	----	----

General belt tolerance is +0/-0.4% at 23°C/73°F and 50% RH. For exact belt width contact Customer Service. Non standard belt width on request.

*Max. Load per Drive Sprocket. Belt material: PP with snub roller 2000 N (450 lbf) without snub roller 1250 N (281 lbf).

**Max. Spacing between wear strips, Carry: 152 mm (6 in); Return: 304 mm (12 in).

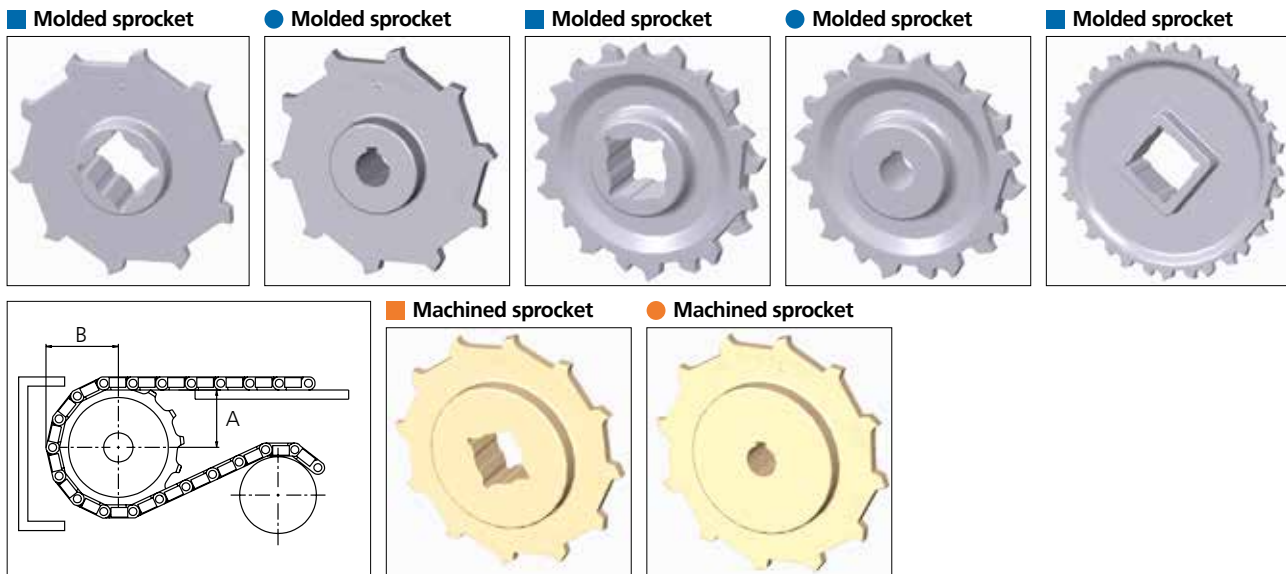
= Single Link

Any questions? Please contact us.

Sprocket

No of teeth	Bore size													Overall diameter		Pitch-diameter		Hub-diameter		A-dimension		B-dimension		Single row/One way	Double row/Two way	Molded PA6 LG	Machined PA6 N
	Pilot bore	in	0.75	0.78	0.98	1.00	1.18	1.25	1.50	1.57	2.36	2.50	3.54														
	mm	19.1	20.0	25.0	25.4	30.0	31.8	38.1	40.0	60.0	63.5	90.0	mm	in	mm	in	mm	in	mm	in							
Z06	x				●	●	●	■	■				99.5	3.92	101.6	4.00	65.0	2.56	36.0	1.42	59.3	2.33	x		x		
Z08	x				●	●	●	■	■				132.9	5.23	132.8	5.23	65.0	2.56	53.3	2.10	74.9	2.95	x		x		
Z10	x					●	●	●	■	■			166.3	6.55	164.4	6.47	65.0	2.56	70.2	2.76	90.7	3.57	x	x	x		
Z10										■	■		166.3	6.55	164.4	6.47	120.0	4.72	70.2	2.76	90.7	3.57	x	x	x		
Z12	x					●	●	●	■	■	■		198.6	7.82	196.3	7.73	120.0	4.72	86.8	3.42	106.6	4.20	x	x	x		
Z16	x					●	●	●	■	■	■		263.8	10.39	260.4	10.25	160.0	5.90	119.7	4.71	138.7	5.46		x	x		
Z16	x					●	●	●	■	■	■		263.8	10.39	260.4	10.25	150.0	5.90	119.7	4.71	138.7	5.46	x			x	

Non standard material and color: See uni Material and Color Overview.



Other sprocket sizes are available upon request.

Two-part sprocket are available upon request.

Round bores are always delivered with keyway.

Other bore sizes are available upon request.

uni Retainer Rings: See uni Retainer Ring data sheet

Width of sprocket = Single row: 42.3 mm (1.66 in)

Double row: 50.0 mm (1.96 in)

Width of tooth = Single row: 9.5 mm (0.37 in)

Double row: 17.0 mm (0.66 in)

Max load per sprocket shown does not take bore size into account.

Please also ensure that sufficient size shaft is chosen for corresponding load.

For correct sprocket position: See uni Assembly Instructions for uni MPB.

For more detailed sprocket information, contact Customer Service.

Any questions? Please contact us.

Morskate Aandrijvingen BV

Oosterveldsingel 47A
7558 PJ Hengelo (Ov)
The Netherlands

NL

T +31 (0)74 - 760 11 11
info@morskateaandrijvingen.nl
www.morskateaandrijvingen.nl

DE

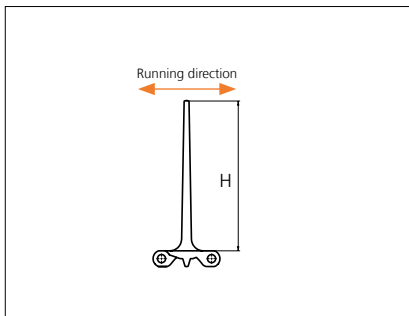
T +49 692 - 222 34 95
info@morskateantriebstechnik.de
www.morskateantriebstechnik.de

EN

T +31 (0)74 - 760 11 11
info@morskatedrivetechnology.com
www.morskatedrivetechnology.com

Plastic Modular Belt

Accessories **uni MPB** Type **Flights**



Type	Material & color	H		Link size	Width		Indent both sides	
		mm	in		mm	in	mm	in
Flat	PE-I	5.0	0.20	K600	151.0	5.94	3.0	0.12
	PP-I	10.0	0.39	K600	151.0	5.94	3.0	0.12
	PE-I							
	POM-D PP-I PE-I	25.4	1.00	K600	151.0	5.94	0.0	0.00
		50.8	2.00	K600	151.0	5.94	0.0	0.00
		76.2	3.00	K600	151.0	5.94	0.0	0.00
		101.6	4.00	K600	151.0	5.94	0.0	0.00
		101.6	4.00	K600	151.0	5.94	34.0*	1.34
152.4	6.00	K600	151.0	5.94	0.0	0.00		

*Indent only in one side.

Depending on height and spacing the use of product supports may influence the backflex radius.

STANDARD

STRAIGHT RUNNING

PITCH 50.8 MM/2.00 IN

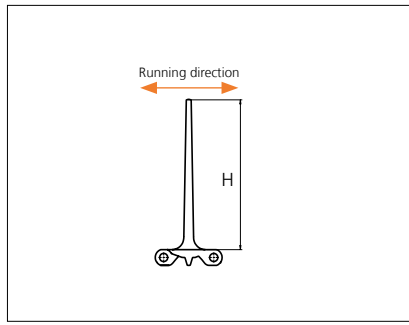
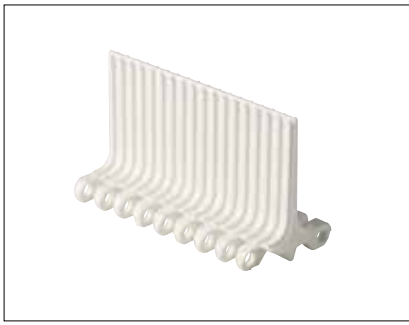
Any questions? Please contact us.

Morskate Aandrijvingen BV
 Oosterveldsingel 47A
 7558 PJ Hengelo (Ov)
 The Netherlands

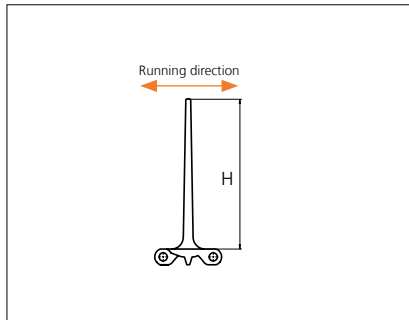
NL
 T +31 (0)74 - 760 11 11
 info@morskateaandrijvingen.nl
 www.morskateaandrijvingen.nl

DE
 T +49 692 - 222 34 95
 info@morskateantriebstechnik.de
 www.morskateantriebstechnik.de

EN
 T +31 (0)74 - 760 11 11
 info@morskatedrivetechnology.com
 www.morskatedrivetechnology.com

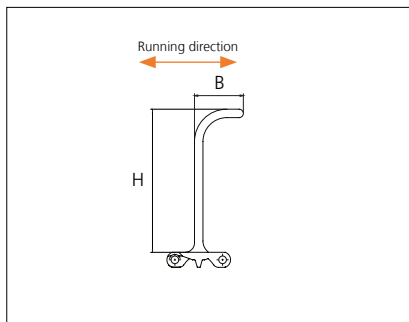


Type	Material & color	H		Link size	Width		Indent both sides	
		mm	in		mm	in	mm	in
Non Stick	PP-I <input type="checkbox"/> W <input checked="" type="checkbox"/> B <input checked="" type="checkbox"/> N	76.2	3.00	K600	151.0	5.94	0.0	0.00
	PE-I <input type="checkbox"/> W <input checked="" type="checkbox"/> B <input checked="" type="checkbox"/> N	101.6	4.00	K600	151.0	5.94	0.0	0.00

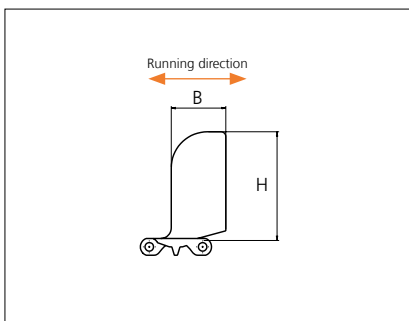


Type	Material & color	H		Link size	Width		Indent both sides	
		mm	in		mm	in	mm	in
10% Non Stick	PP-I <input type="checkbox"/> W <input checked="" type="checkbox"/> B <input checked="" type="checkbox"/> N	50.8	2.00	K600	151.0	5.94	0.0	0.00
	PE-I <input type="checkbox"/> W <input checked="" type="checkbox"/> B <input checked="" type="checkbox"/> N	76.2	3.00	K600	151.0	5.94	0.0	0.00
		101.6	4.00	K600	151.0	5.94	0.0	0.00

Any questions? Please contact us.



Type	Material & color	H		B		Link size	Width		Indent both sides	
		mm	in	mm	in		mm	in	mm	in
Bent	PP-I W B	76.2	3.00	9.2	0.36	K600	151.0	5.94	0.0	0.00
	PP-I W B PE-I N	101.6	4.00	9.2	0.36	K600	151.0	5.94	0.0	0.00
	PP-I W B	152.4	6.00	9.2	0.36	K600	151.0	5.94	0.0	0.00



Type	Material & color	H		B		Link size	Width		Indent both sides	
		mm	in	mm	in		mm	in	mm	in
Cupped	PP-I W	101.6	4.00	52.0	2.05	K600	151.0	5.94	0.0	0.00

Any questions? Please contact us.

Morskate Aandrijvingen BV

Oosterveldsingel 47A
7558 PJ Hengelo (Ov)
The Netherlands

NL

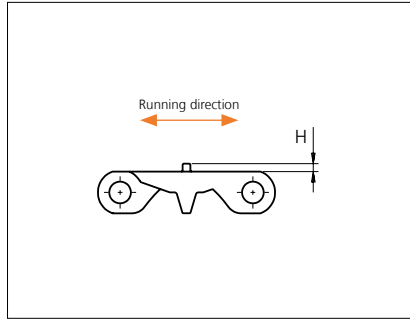
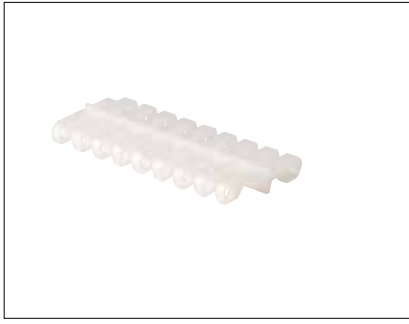
T +31 (0)74 - 760 11 11
info@morskateaandrijvingen.nl
www.morskateaandrijvingen.nl

DE

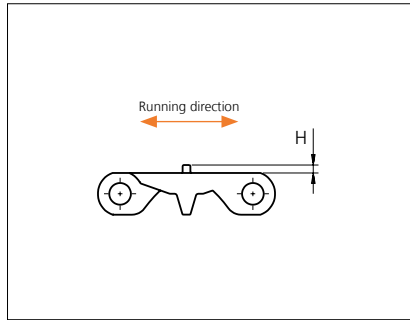
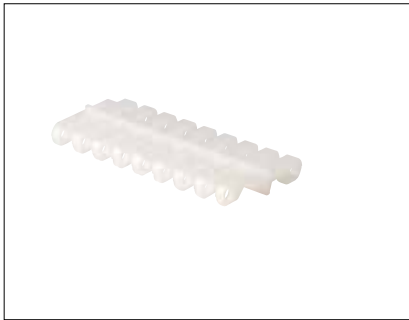
T +49 692 - 222 34 95
info@morskateantriebstechnik.de
www.morskateantriebstechnik.de

EN

T +31 (0)74 - 760 11 11
info@morskatedrivetechnology.com
www.morskatedrivetechnology.com



Type	Material & color	H		Link size	Width		Indent both sides	
		mm	in		mm	in	mm	in
Flat 20%	PE-I	5.0	0.20	K600	151.0	5.94	3.0	0.12

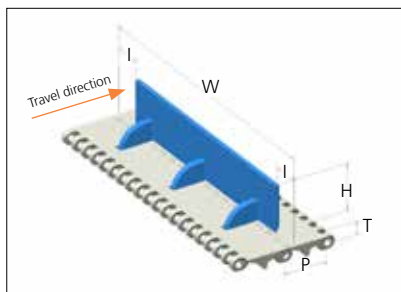


Type	Material & color	H		Link size	Width		Indent both sides	
		mm	in		mm	in	mm	in
Flat 22%	PE-I	3.0	0.12	K600	151.0	5.94	3.0	0.12
	PE-I							

Any questions? Please contact us.

Plastic Modular Belt

uni MPB Pop-up flight



Straight running elevator belt
 Nominal pitch: 50.8 mm (2.00 in)
 Surface type: Flat
 Surface opening: Closed
 Backflex radius: 100 mm (3.9 in) min.
 Pin diameter: 8 mm (0.31 in)

Belt material & color	PP W B	PE-I N B		mm	in		mm	in	
Pin material & color	PP W	PE W		H	54.8	2.16	T	16.0	0.63
Flight material & color	PP-I W B	PE-I W B		I	34.0	1.34	-	-	-
				P	50.8	2.00	-	-	-

Non standard material and color: See uni Material and Color Overview.

Alternative pin and lock materials: Pin: PA6.6 **N** PP **W** PE **W** PBT **LG** SS304

Lockpin: PA6.6 **B** PBT **LG**

Belt load capacity

Belt dimensions						Permissible tensile force (Belt/pin material)				Maximum product load per flight row	
Belt width (W)		Indents (I)*		Flight width (B)		PP/PP		PE-I/PE		Kg	Lbs
mm	in	mm	in	mm	in	N	lbf	N	lbf		
302	11.9	34	1.34	234	9.2	4832	1086	3926	883	12	27
353	13.9	34	1.34	285	11.2	5648	1270	4589	1032	14	31
403	15.9	34	1.34	335	13.2	6448	1450	5239	1178	16	36
453	17.8	34	1.34	385	15.2	7248	1629	5889	1324	18	40
504	19.8	34	1.34	436	19.2	8064	1813	6552	1473	20	44
554	21.8	34	1.34	486	19.1	8864	1993	7202	1619	22	49
604	23.8	34	1.34	536	21.1	9664	2173	7852	1765	24	53

General width tolerance is +0/-0.4% at 23°C/73°F. For other widths contact Customer Service.

*Standard indent 34 mm (1.34 in), other indents upon request.

Any questions? Please contact us.

Morskate Aandrijvingen BV

Oosterveldsingel 47A
 7558 PJ Hengelo (Ov)
 The Netherlands

NL

T +31 (0)74 - 760 11 11
 info@morskateaanrijvingen.nl
 www.morskateaanrijvingen.nl

DE

T +49 692 - 222 34 95
 info@morskateantriebstechnik.de
 www.morskateantriebstechnik.de

EN

T +31 (0)74 - 760 11 11
 info@morskatedrivetechnology.com
 www.morskatedrivetechnology.com

STANDARD

STRAIGHT RUNNING

PITCH 50.8 MM/2.00 IN

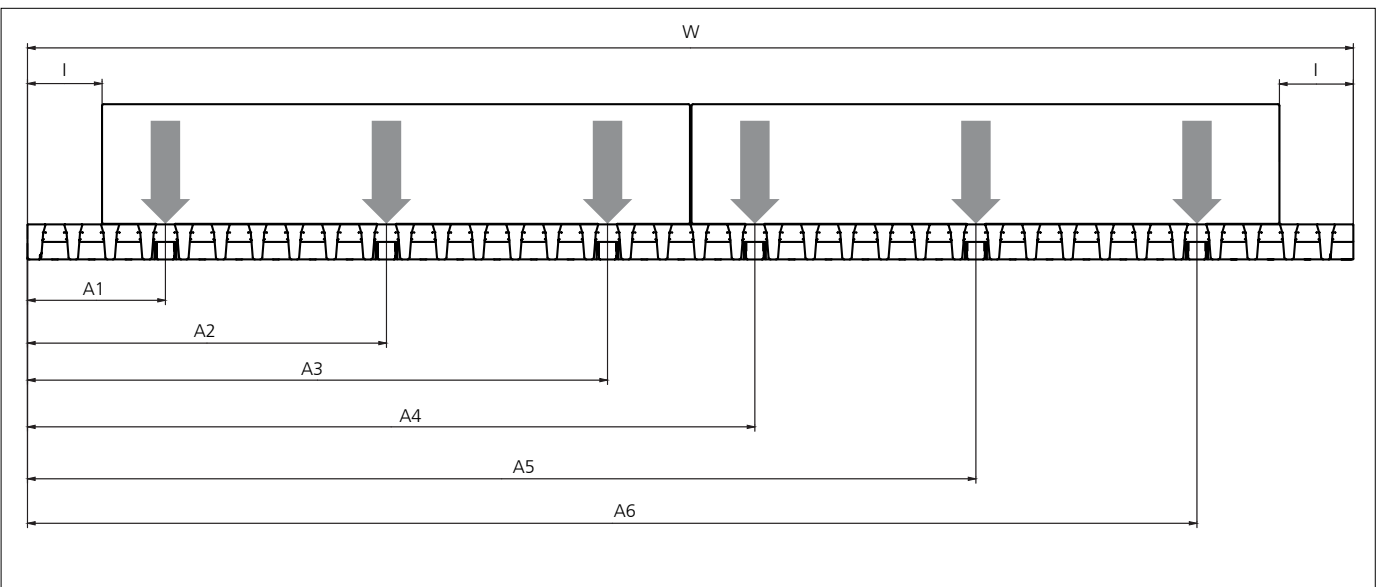
Belt dimensions		Base belt weight (Belt/pin material)				ADD weight per flight row				Construction information		
										Min. no drive sprockets*	No flight cams/ activation wearstrips	Min number of support wearstrips
Belt width (W)		PP/PP		PE-I/PE		PP-I/PP		PE-I/PE		Pieces	Pieces	Pieces
mm	in	Kg/m	lb/ft	Kg/m	lb/ft	Kg/m	lb/ft	Kg/m	lb/ft			
302	11.9	2.5	1.7	2.7	1.8	0.08	0.17	0.08	0.18	2	3	2
353	13.9	2.9	2.0	3.1	2.1	0.10	0.22	0.10	0.23	2	4	2
403	15.9	3.3	2.2	3.5	2.4	0.12	0.26	0.13	0.28	2	4	2
453	17.8	3.8	2.5	4.0	2.7	0.13	0.28	0.14	0.30	3	5	2
504	19.8	4.2	2.8	4.4	3.0	0.14	0.31	0.15	0.33	3	5	2
554	21.8	4.6	3.1	4.9	3.3	0.16	0.35	0.17	0.38	4	6	2
604	23.8	5.0	3.4	5.3	3.6	0.17	0.38	0.18	0.40	4	6	2

*Max. Load per Drive Sprocket. Belt material: POM-DI with snub roller 2000 N (450 lbf) without snub roller 1250 N (281 lbf)

Placing of activation wearstrips

Belt dimensions						Activation wearstrips Distance from belt left hand edge											
Belt width (W)		Indents* (I)		Flight width (B)		A1		A2		A3		A4		A5		A6	
mm	in	mm	in	mm	in	mm	in	mm	in	mm	in	mm	in	mm	in	mm	in
302	11.9	34	1.34	234	9.2	46	1.81	147	5.79	248	9.76	-	-	-	-	-	-
353	13.9	34	1.34	285	11.2	63	2.48	164	6.46	197	7.76	298	11.73	-	-	-	-
403	15.9	34	1.34	335	13.2	63	2.48	164	6.46	231	9.09	332	13.07	-	-	-	-
453	17.8	34	1.34	385	15.2	46	1.81	147	5.79	248	9.76	298	11.73	399	15.71	-	-
504	19.8	34	1.34	436	19.2	63	2.48	164	6.46	265	10.43	332	13.07	433	17.05	-	-
554	21.8	34	1.34	486	19.1	46	1.81	147	5.79	248	9.76	281	11.06	382	15.04	483	19.02
604	23.8	34	1.34	536	21.1	63	2.48	164	6.46	265	10.43	332	13.07	433	17.05	533	20.98

*Standard indent 34 mm (1.34 in), other indents upon request.



↓ = Placing of activation wearstrip

Dimensions for Pop-up flight system are from left hand edge of belt, looking down from top of belt with travel direction moving away from viewing point.

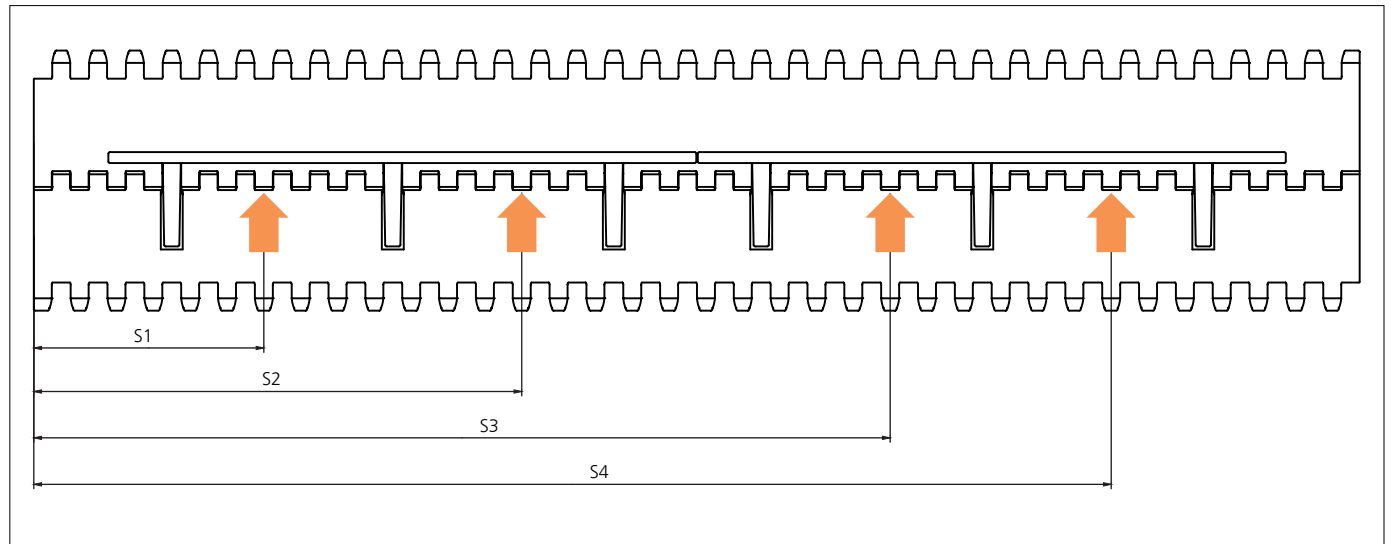
Any questions? Please contact us.

Placing of sprockets

Belt dimensions						Min. No drive sprockets**	Sprocket Position Distance from belt left hand edge							
Belt width (W)		Indents* (I)		Flight width (B)			S1		S2		S3		S4	
mm	in	mm	in	mm	in		mm	in	mm	in	mm	in	mm	in
302	11.9	34	1.34	234	9.2	2	88	3.46	206	8.11	-	-	-	-
353	13.9	34	1.34	285	11.2	2	105	4.13	256	10.08	-	-	-	-
403	15.9	34	1.34	335	13.2	2	105	4.13	290	11.42	-	-	-	-
453	17.8	34	1.34	385	15.2	3	88	3.46	206	8.11	357	14.06	-	-
504	19.8	34	1.34	436	19.2	3	105	4.13	223	8.78	391	15.39	-	-
554	21.8	34	1.34	486	19.1	4	88	3.46	206	8.11	323	12.72	441	17.36
604	23.8	34	1.34	536	21.1	4	105	4.13	223	8.78	374	14.72	491	19.33

*Standard indent 34 mm (1.34 in), other indents upon request.

**Max. Load per Drive Sprocket. Belt material: POM-DI with snub roller 2000 N (450 lbf) without snub roller 1250 N (281 lbf)



↑ = Placing of sprockets

Ensure sprockets cannot contact the Pop-up flight activation cams. These cams hinge below the belt surface when unsupported by wear-strips. If needed use extra retaining rings each side of floating sprockets to ensure they cannot contact the activation cams but can still float sideways.

Any questions? Please contact us.

Morskate Aandrijvingen BV

Oosterveldsingel 47A
7558 PJ Hengelo (Ov)
The Netherlands

NL

T +31 (0)74 - 760 11 11
info@morskateaandrijvingen.nl
www.morskateaandrijvingen.nl

DE

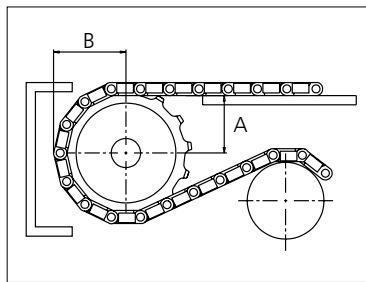
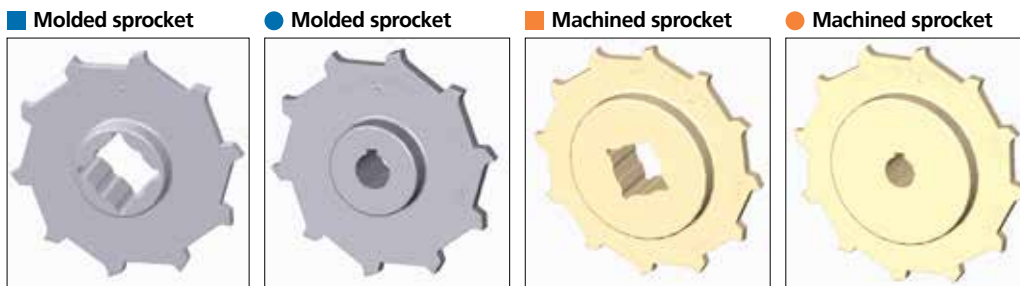
T +49 692 - 222 34 95
info@morskateantriebstechnik.de
www.morskateantriebstechnik.de

EN

T +31 (0)74 - 760 11 11
info@morskatedrivetechnology.com
www.morskatedrivetechnology.com

Sprocket

No of teeth	Bore size												Overall diameter		Pitch-diameter		Hub-diameter		A-dimension		B-dimension		Single row/One way	Molded PA6 LG	Machined PA6 N
	Pilot bore	in	0.75	0.79	0.98	1.00	1.18	1.25	1.50	1.57	2.36	2.50													
	mm	19.1	20.0	25.0	25.4	30.0	31.8	38.1	40.0	60.0	63.5	mm	in	mm	in	mm	in	mm	in	Molded	Machined				
Z08	x				●	●	●	■	■			132.9	5.23	132.8	5.23	65.0	2.56	53.3	2.10	74.9	2.95	x	x		
Z10	x					●	●	■	■			166.3	6.55	164.4	6.47	65.0	2.56	70.2	2.76	90.7	3.57	x	x		
Z10									■	■		166.3	6.55	164.4	6.47	120.0	4.72	70.2	2.76	90.7	3.57	x	x		
Z12	x					●	●	■	■	■	■	198.6	7.82	196.3	7.73	120.0	4.72	86.8	3.42	106.6	4.20	x	x		
Z16	x					●	●	■	■	■	■	263.8	10.39	260.4	10.25	150.0	5.91	119.7	4.71	138.7	5.46	x		x	



uni MPB Single row – one way sprockets as shown above are recommended for use with Pop-up flight system.
 uni MPB Two row – two way sprockets are available and can be used for conveyors which needed to reverse travel direction.
 Other sprocket sizes are available upon request.
 Two-part sprocket are available upon request.
 Round bores are always delivered with keyway.
 Other bore sizes are available upon request.
 uni Retainer Rings: See uni Retainer Ring data sheet
 Width of sprocket = Single row: 42.3 mm (1.67 in)
 Width of tooth = Single row: 9.5 mm (0.37 in)

Max load per sprocket shown does not take bore size into account.
 Please also ensure that sufficient size shaft is chosen for corresponding load.

For more detailed sprocket information, contact Customer Service.

Non standard material and color: See uni Material and Color Overview.

Any questions? Please contact us.